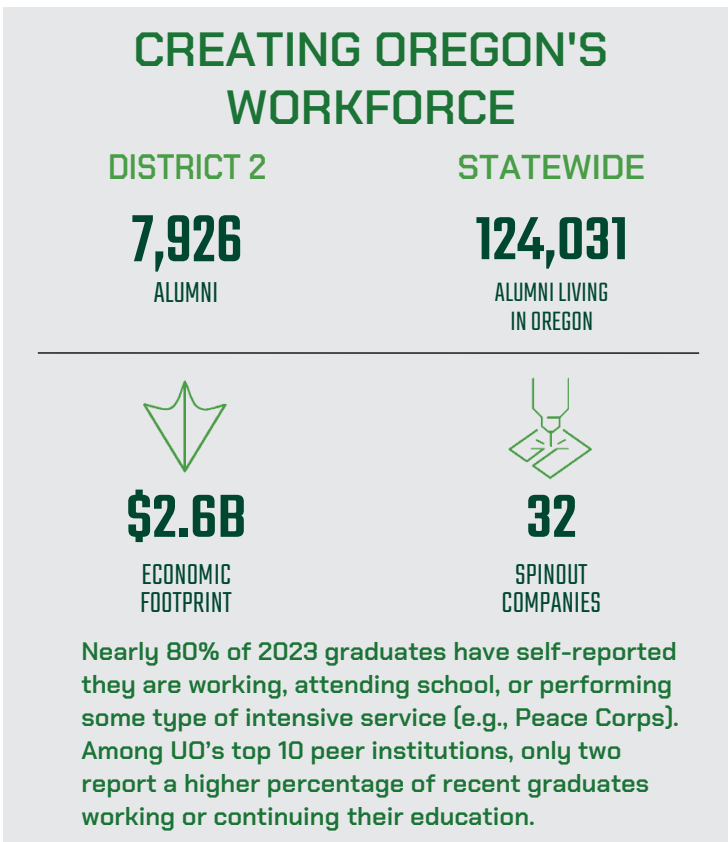
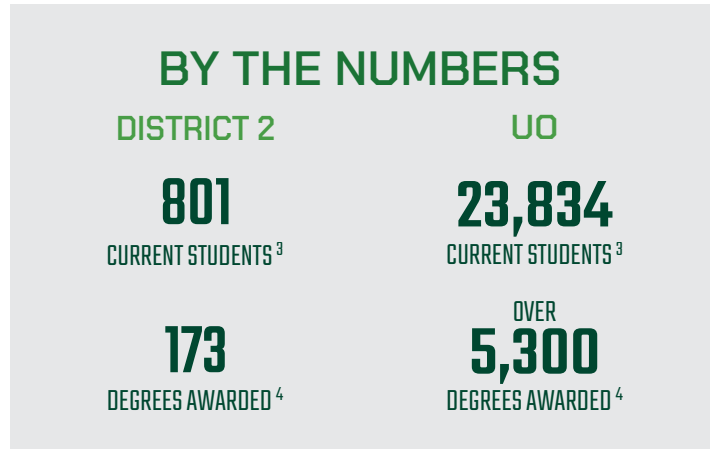
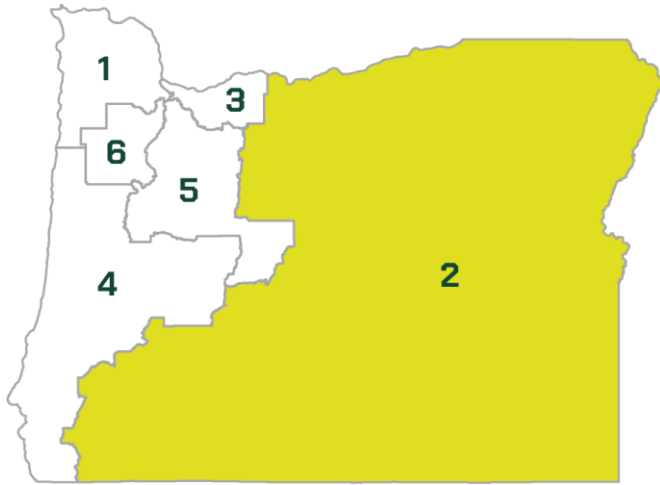
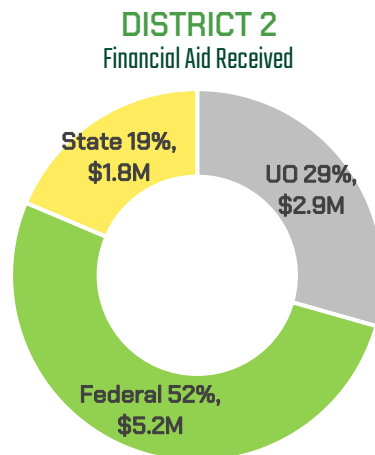
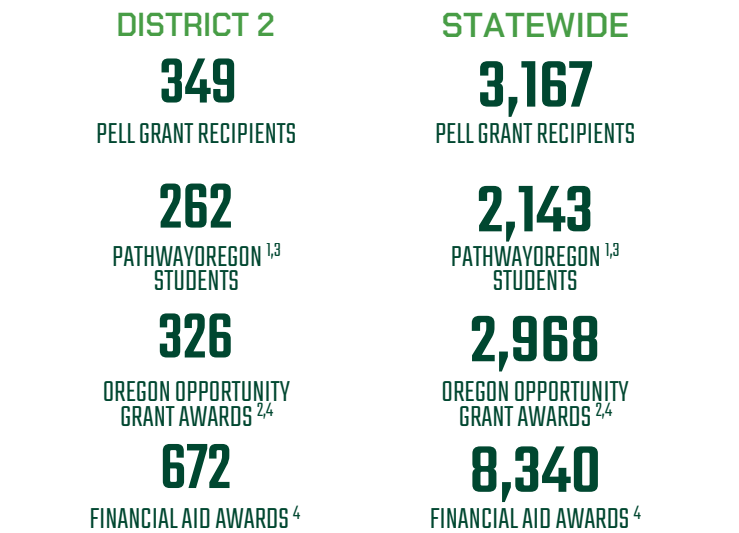


THE DIFFERENCE DUCKS MAKE | 2024

IN CONGRESSIONAL DISTRICT 2



MAKING COLLEGE AFFORDABLE



Sources: UO Institutional Research; UO Student Services and Enrollment Management; Tim Duy, Economic Impact 2020-21 Update



To learn more about the UO's impact, contact us at gcr@uoregon.edu or visit gcr.uoregon.edu/oregon-impact

¹ UO's program that ensures academically-qualified Pell Grant-eligible Oregonians will have their tuition and fees paid through a combination of federal, state and university funds.

² The Oregon Opportunity Grant (OOG) is Oregon's largest state-funded, need-based grant program for college students.

³ Fall 2023 data. ⁴ Academic Year 2022-23 data.

In 2022–23 unmet financial aid need for all UO resident students was \$63.3 million

UO in the 2nd Congressional District

Helping Oregon's K-12 Students Meet their Potential

UO College of Education research models, methods, curriculum, and assessment tools reach 97% of children in Oregon, including innovations that help students develop math and reading fluency to supporting their emotional and behavioral health. For example, in 2022-23 **10 school districts in CD 2** implemented evidence-based interventions, created by UO faculty with the **Center on Positive Behavioral Interventions & Supports (PBIS)**, that help students develop social-emotional-behavioral competencies and prevent unwanted behaviors.

The UO ranks third among all universities in the nation for the number grants and contracts received from the Institute of Education Sciences.

Promoting Resiliency Through Multi-Hazard Early Warning and Monitoring

The UO's **Oregon Hazards Lab (OHAZ)**, in collaboration the **U.S. Geological Survey** and other public and private partners, operates the **ShakeAlert** Earthquake Early Warning System, which uses a network of hundreds of onshore seismic sensors across the West Coast, including 57 in CD 2, to quickly detect earthquakes so that people in impacted areas can be alerted seconds to minutes before they feel shaking. This empowers people to carry out pre-determined protective actions that increase safety, while industry, utilities and transportation sectors can use automation to power down or protect critical operations.

In CD 2, **Rogue Valley Council of Governments (RVCOG)** has helped local jurisdictions become early adopters of ShakeAlert. The **Medford 549C School District** is the first district in the state to install ShakeAlert-powered technology in all building paging systems, which project a pre-programmed announcement that gives 14,000 students seconds to tens of seconds to drop, cover, and hold before shaking occurs. The technology is also used to alert healthcare workers and patients at **Providence Medford Medical Center** and to automatically close reservoir valves in **Grants Pass** to protect water in storage.

With funding support from the **State of Oregon** and the **Bureau of Land Management (BLM)**, OHAZ also operates Oregon's **public facing wildfire detection and alerting network**. The system's state-of-the-art pan-tilt-zoom fire cameras automatically detect fires and alert first responders who confirm fire ignition, scale fire resources up or down, and monitor fire behavior. The system also helps evacuations through enhanced situational awareness. Currently, there are 22 cameras located across CD 2.

In CD 2, **RVCOG** and the UO partnered on a **FEMA** application for 12 more cameras to be installed in **Jackson and Josephine Counties**. In Oregon's High Desert region, thanks to BLM funding, three new sites will be installed in 2024.



An example of a fire camera (top of building) and seismic sensor (right of image) located at the defunct Wagontire Mtn Lookout Tower in Harney County.

